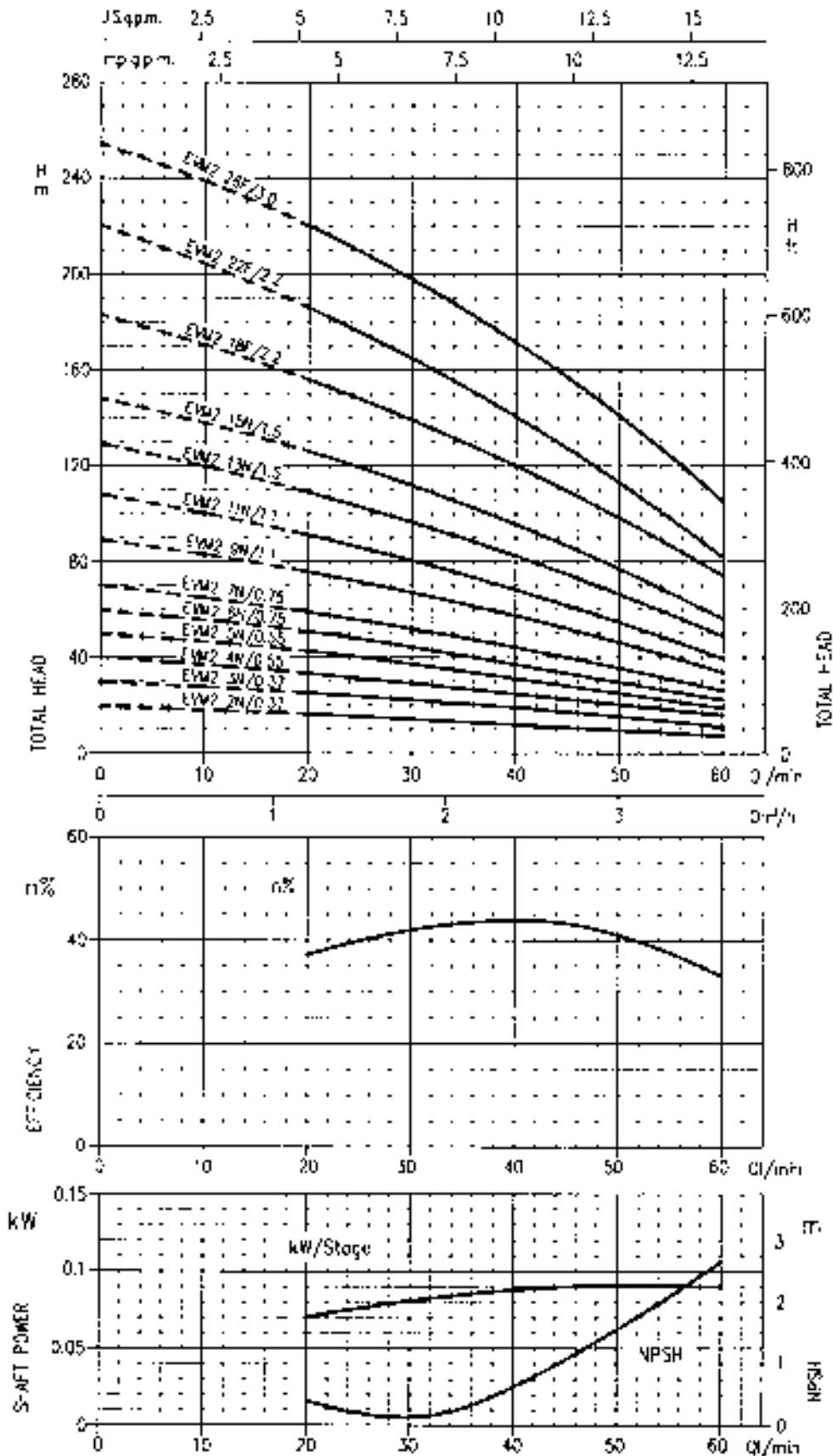
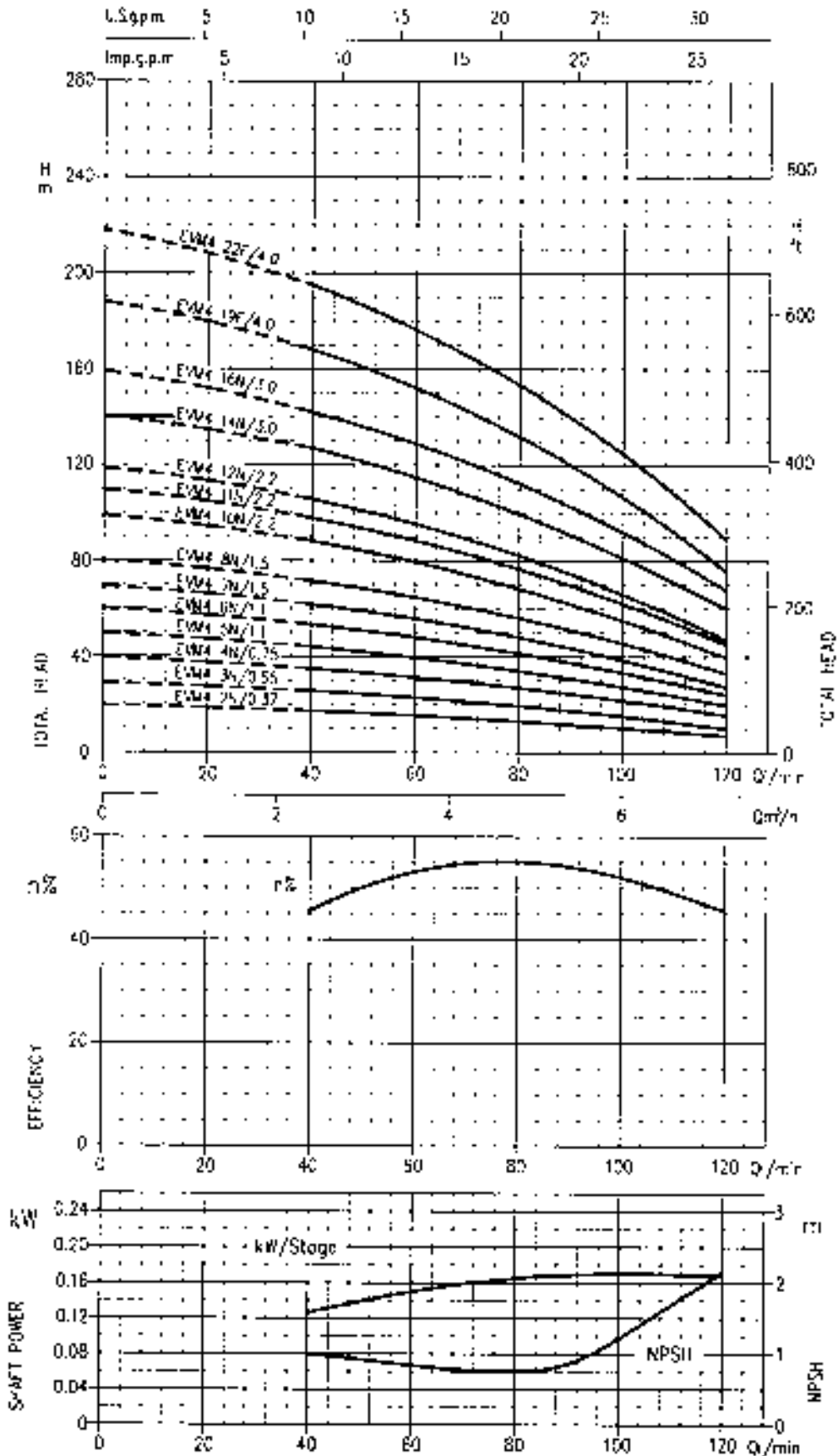


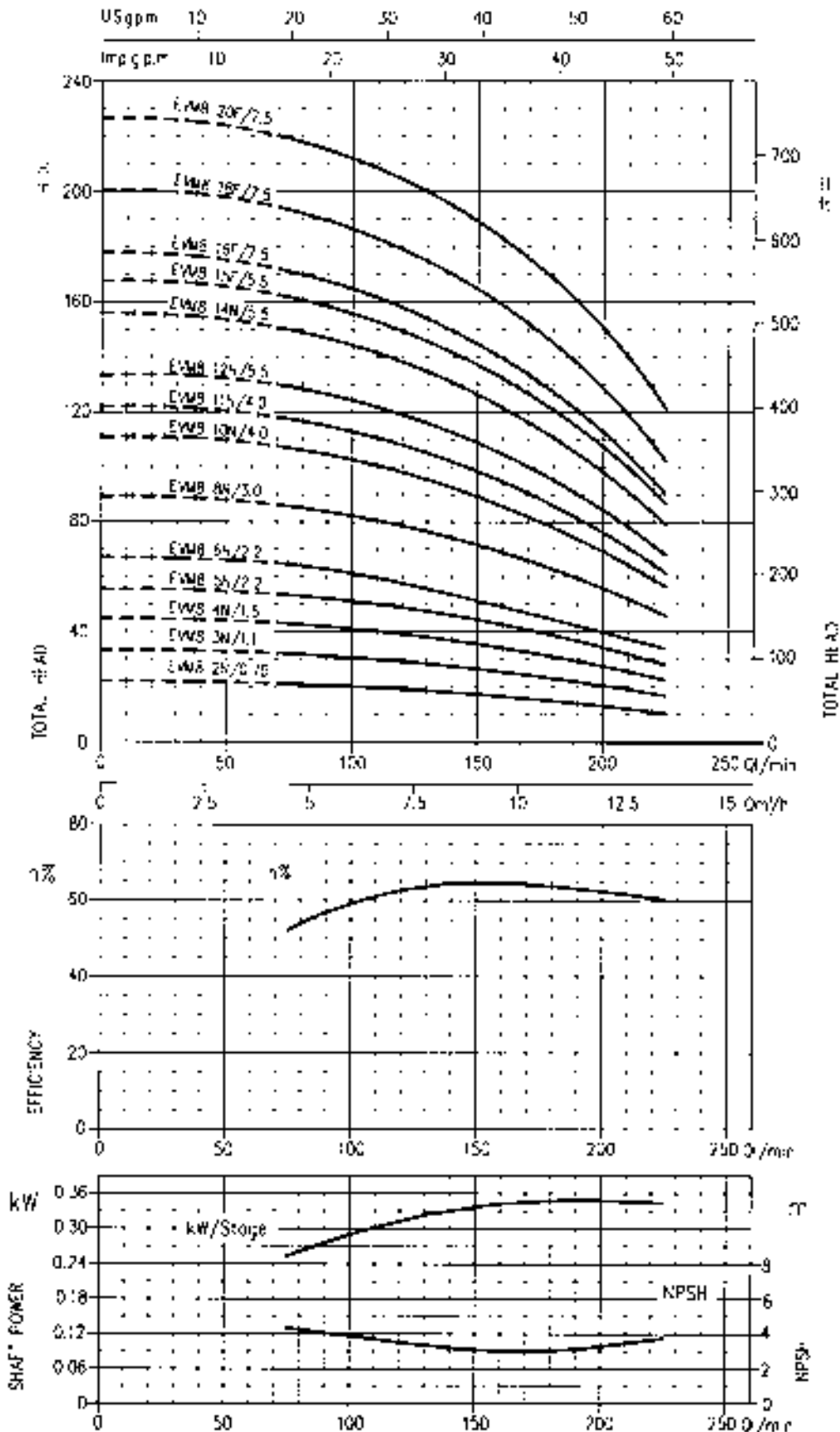
**PERFORMANCE CURVES EVM2 series** (according to ISO 9906 grade 2)

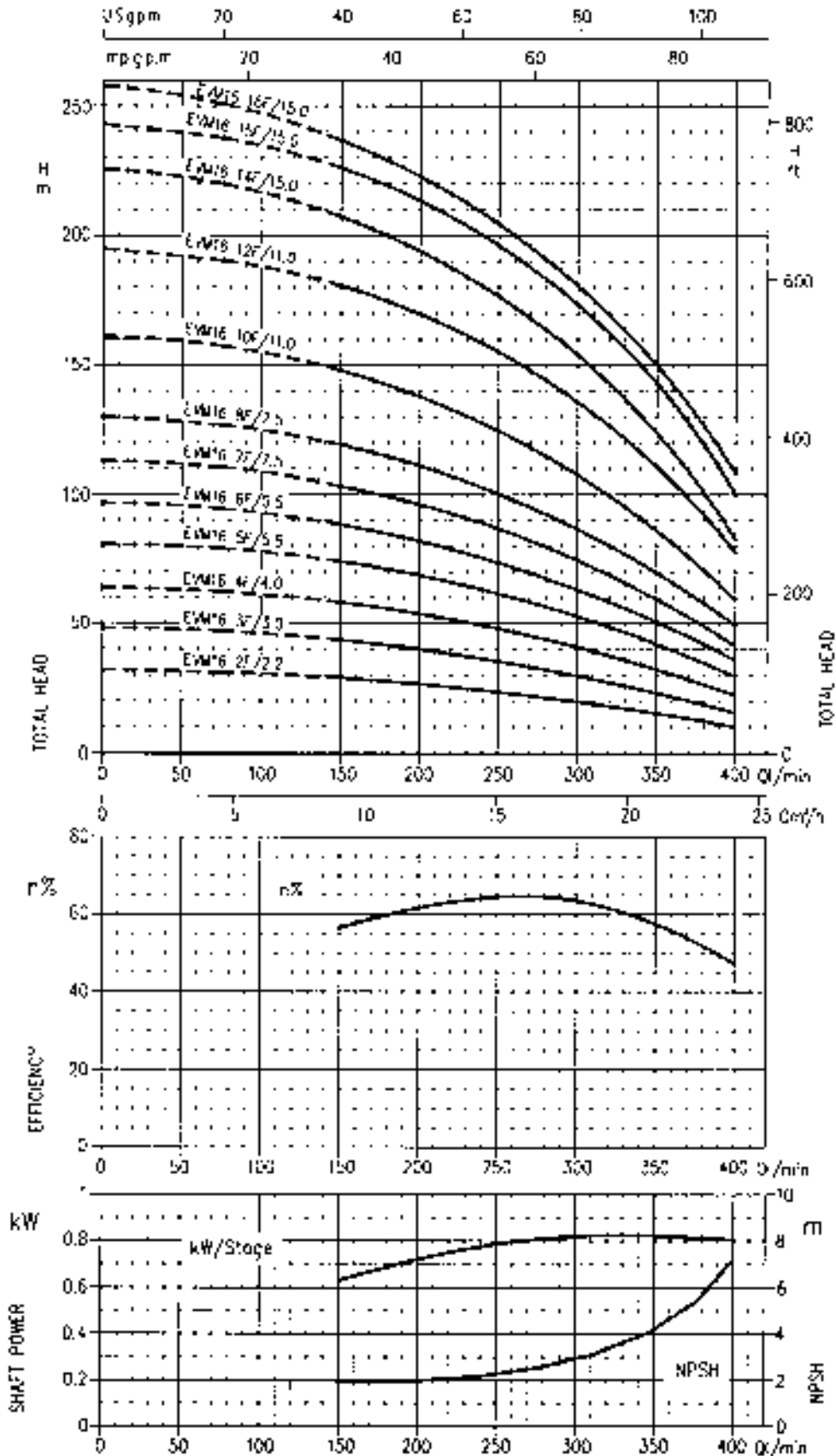


**PERFORMANCE CURVES EVM4 series** (according to ISO 9906 grade 2)

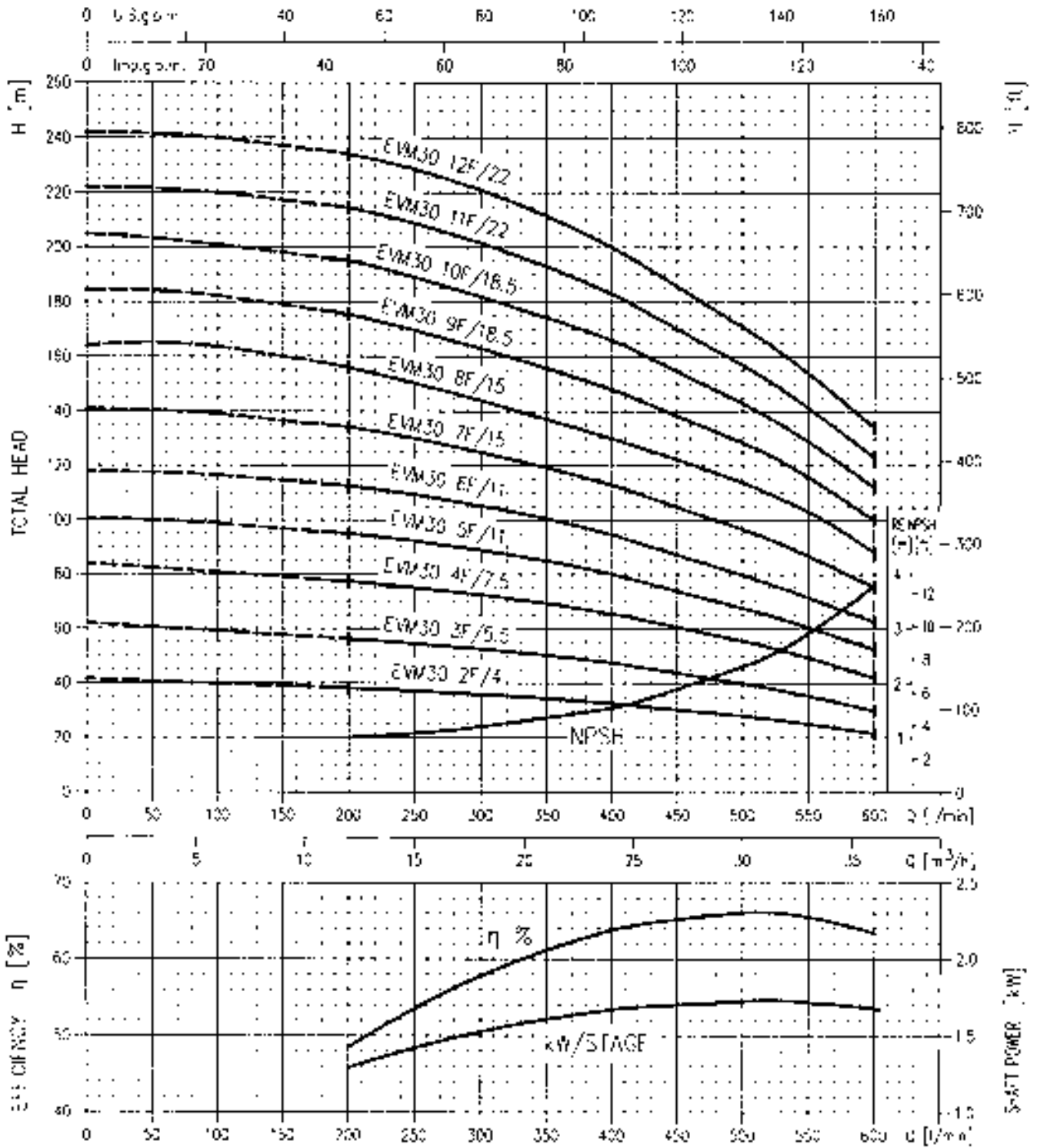


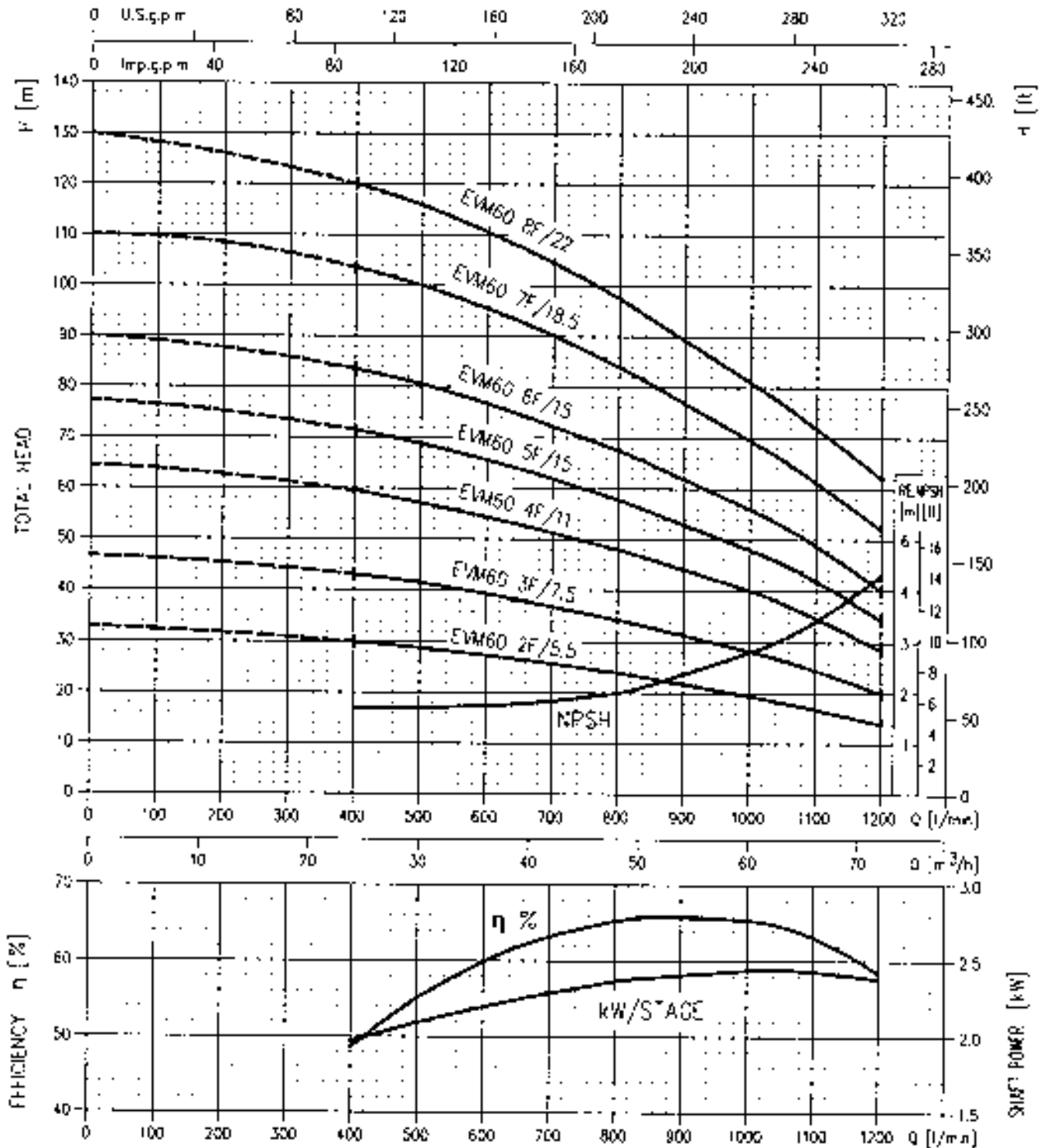
**PERFORMANCE CURVES EVM8 series** (according to ISO 9906 grade 2)



**PERFORMANCE CURVES EVM16 series** (according to ISO 9906 grade 2)


**PERFORMANCE CURVES EVM 30 series** (according to ISO 9906 grade 2)



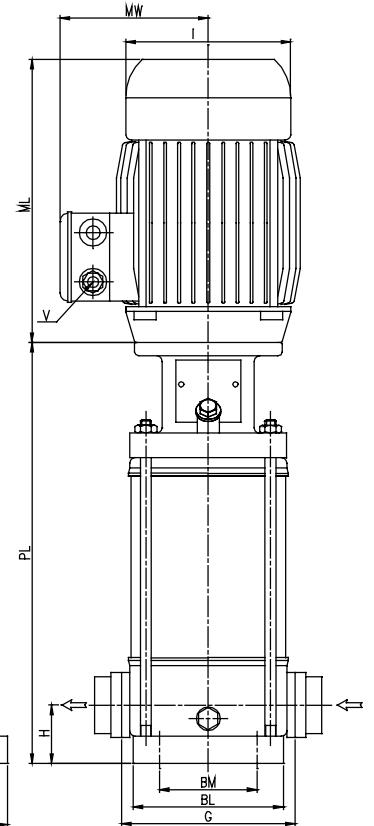
**PERFORMANCE CURVES EVM 60 series** (according to ISO 9906 grade 2)


**OVAL FLANGE (16 bar)**

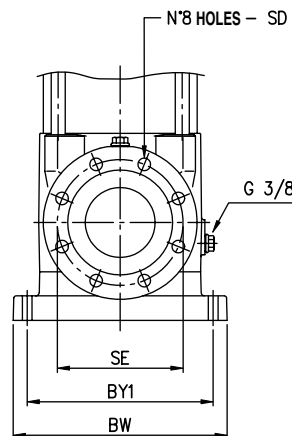
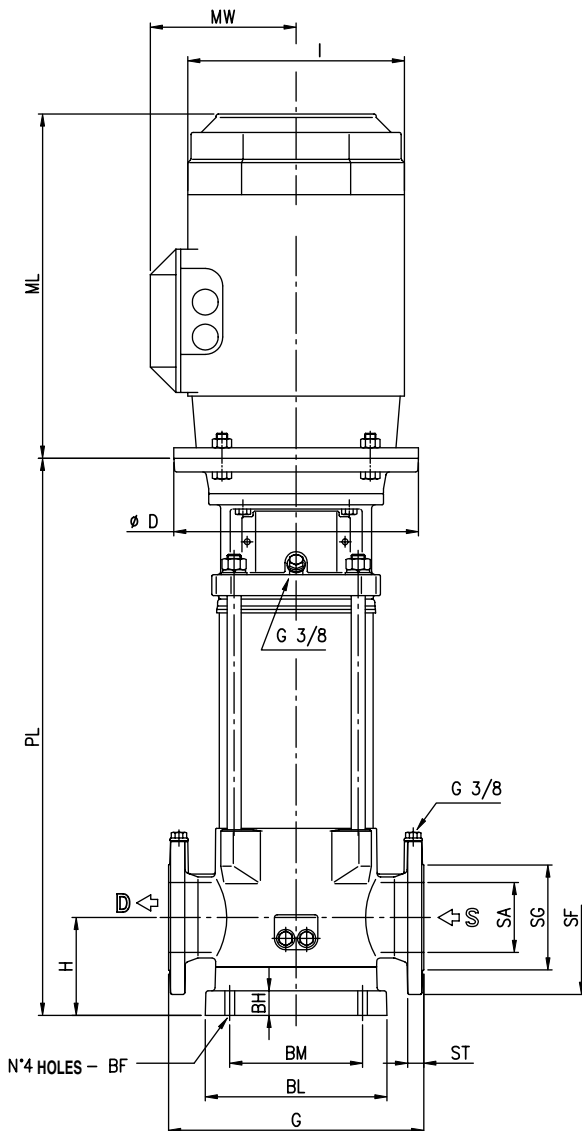
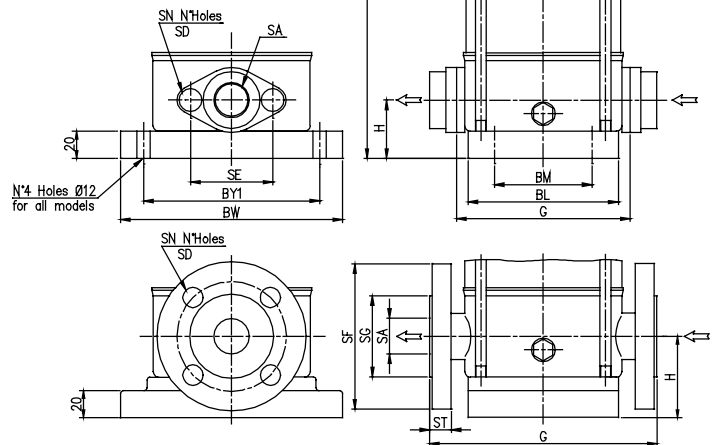
Type pump	Diameter nominal	Application
EVM 2	Ø25	Up to 15 stages
EVM 4	Ø32	Up to 16 stages
EVM 8	Ø40	Up to 14 stages

**ROUND (DIN) FLANGE (25 bar)**

Type pump	Diameter nominal	Application
EVM 2	Ø25	From 18 to 26 stages
EVM 4	Ø32	From 19 to 22 stages
EVM 8	Ø40	From 15 to 20 stages
EVM 16	Ø50	From 2 to 15 stages



**EVM 2-16**



**EVM 30-60**

